

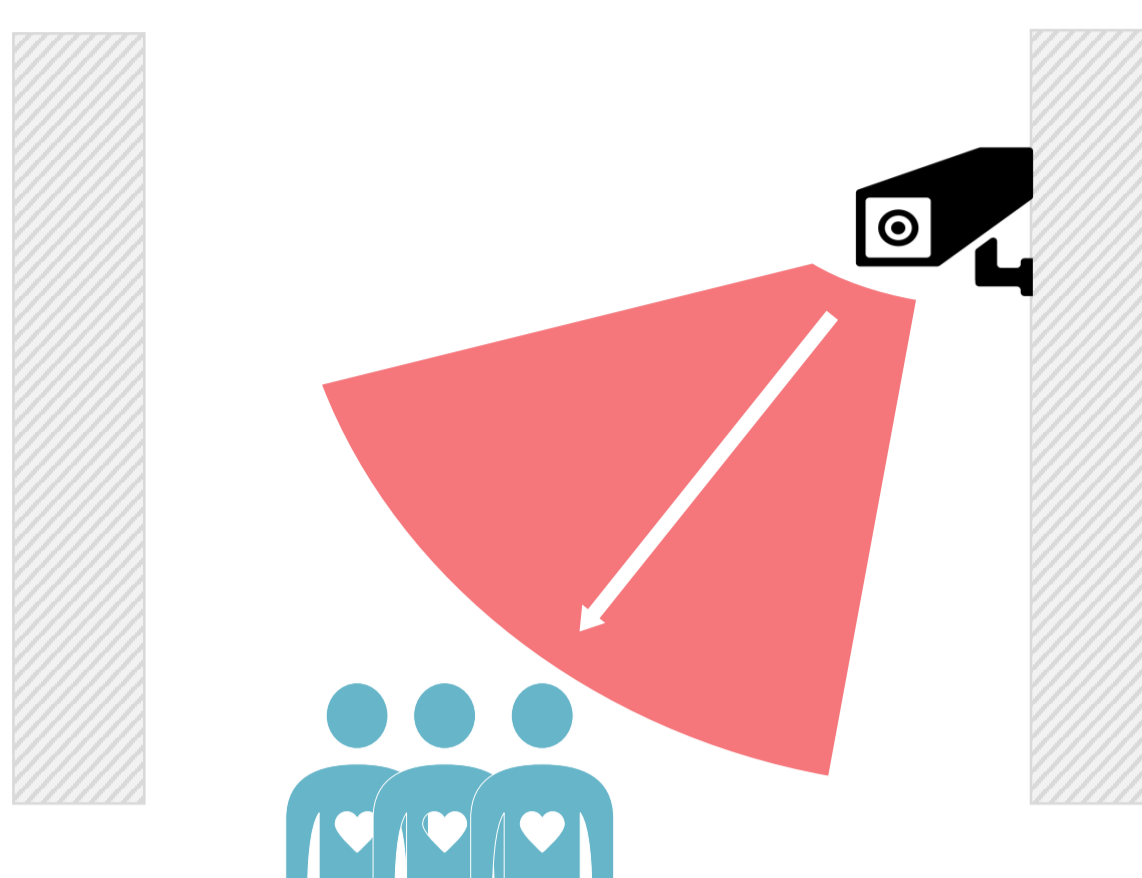
Fever Screening Thermal Camera Installation & Configuration Guide



DS-2TD2636B

Temperature measurement range: 30-45°C
 Working temperature: 10-35°C
 Accuracy: ±0.5°C
 Resolution: 384 × 288

1 Installation-Wall-mounted deployment

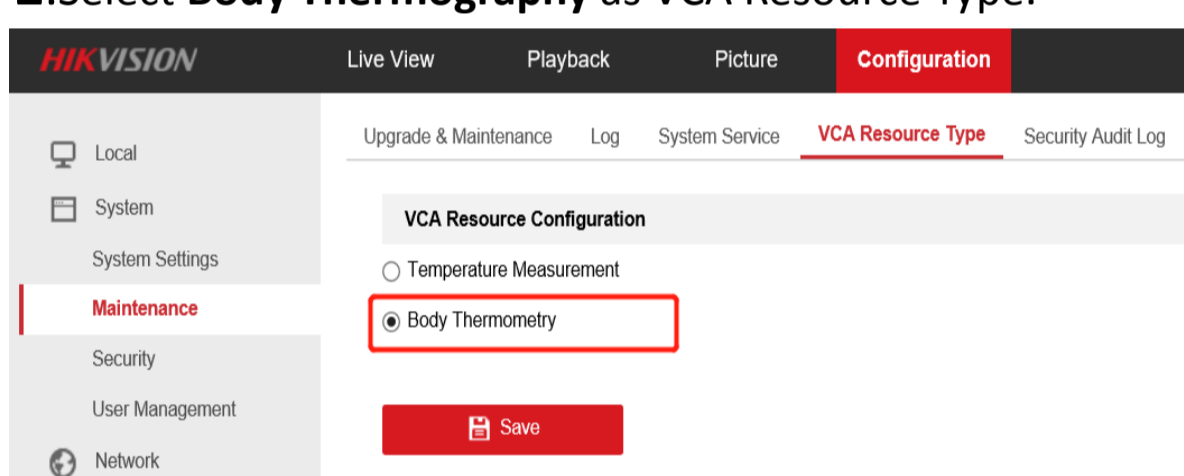


Installation Parameter Recommended

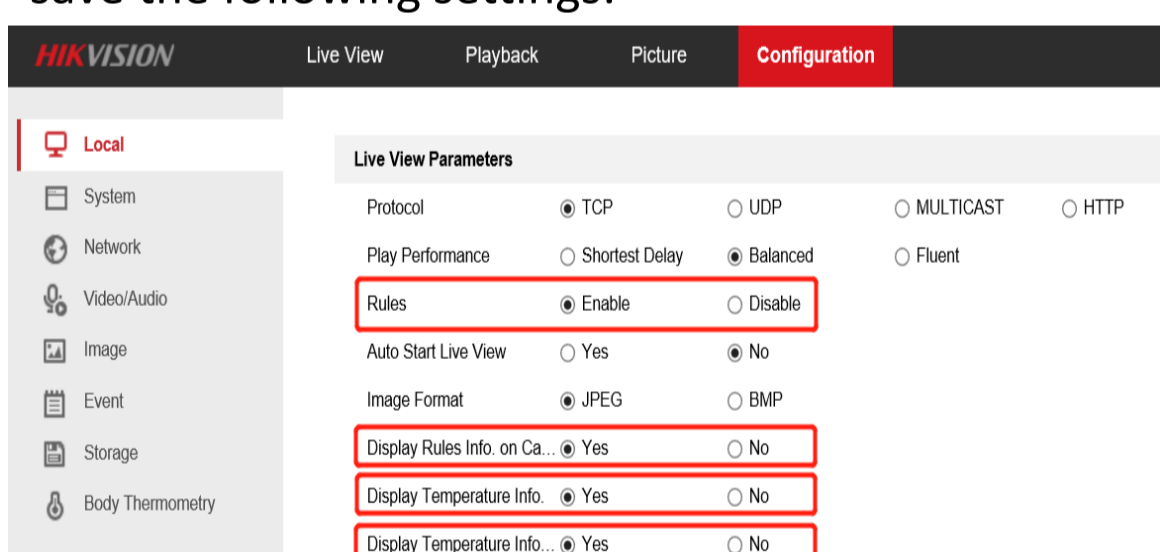
| Model | Distance (between human&camera) | Height | Elevation angle |
|------------------|---------------------------------|--------|-----------------|
| DS-2TD2636B-10/P | 2-7m | 2.5m | ≤20° |
| DS-2TD2636B-13/P | 2.5-7m | | |
| DS-2TD2636B-15/P | 2.5-9m | | |

2 Configuration

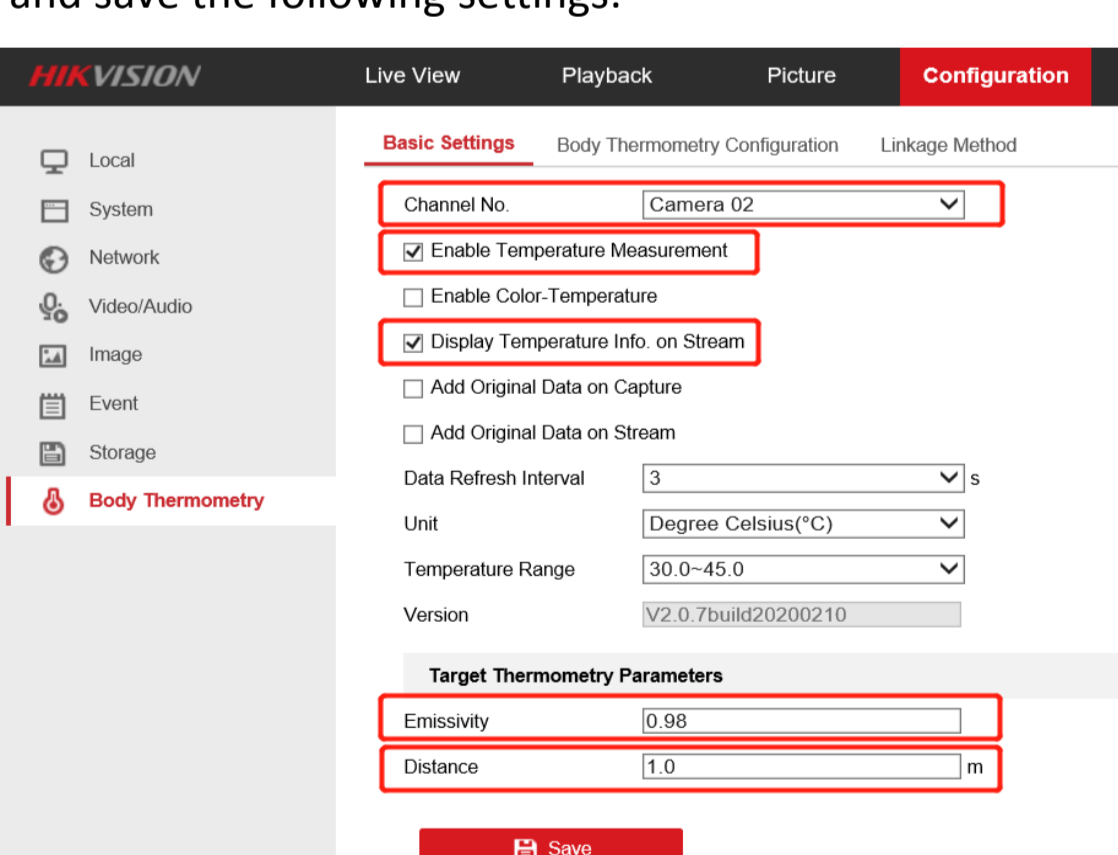
1. Select **Body Thermography** as VCA Resource Type.



2. Go to Local Configuration interface, enable and save the following settings:



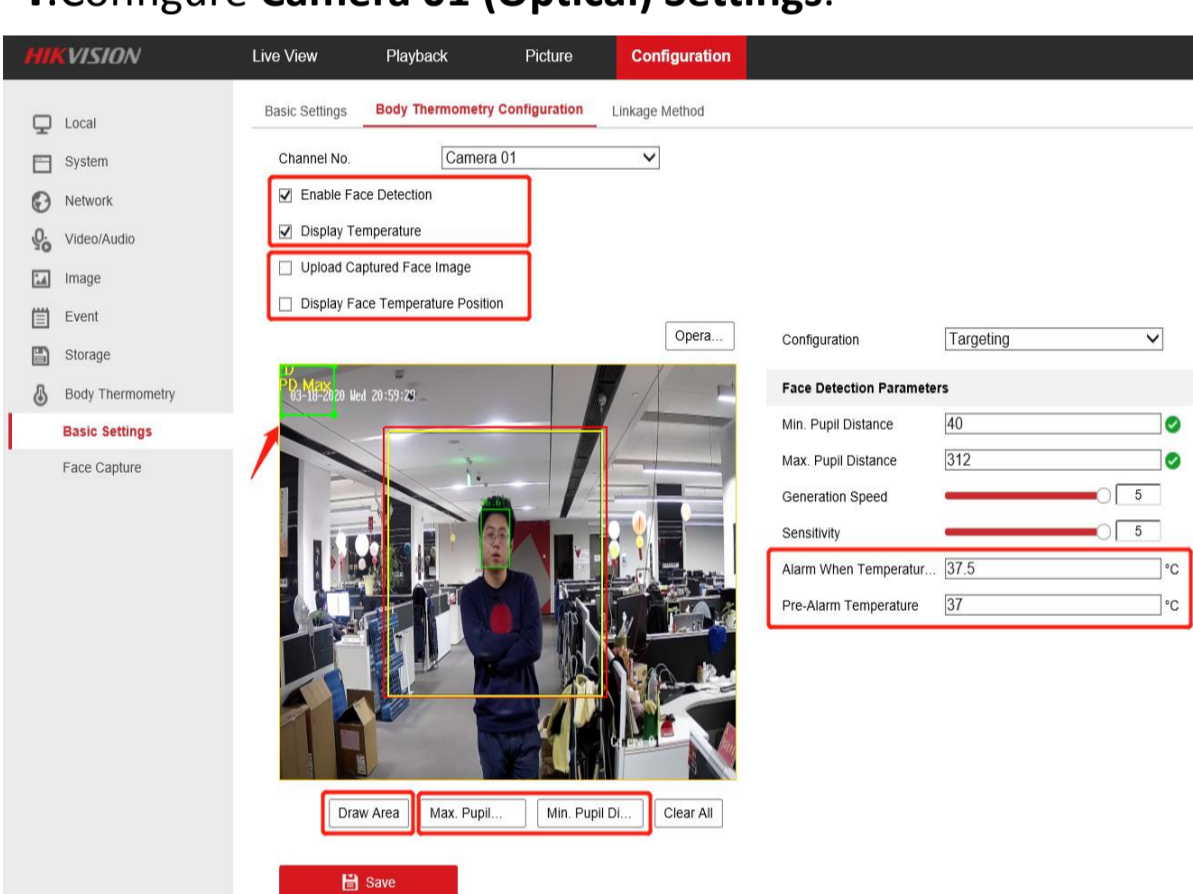
3. Go to Body Thermography **Basic Settings**. Configure and save the following settings:



Emissivity: For human skin, this value is normally set as 0.98.

Distance: The actual distance between the camera and human.

4. Configure Camera 01 (Optical) Settings.

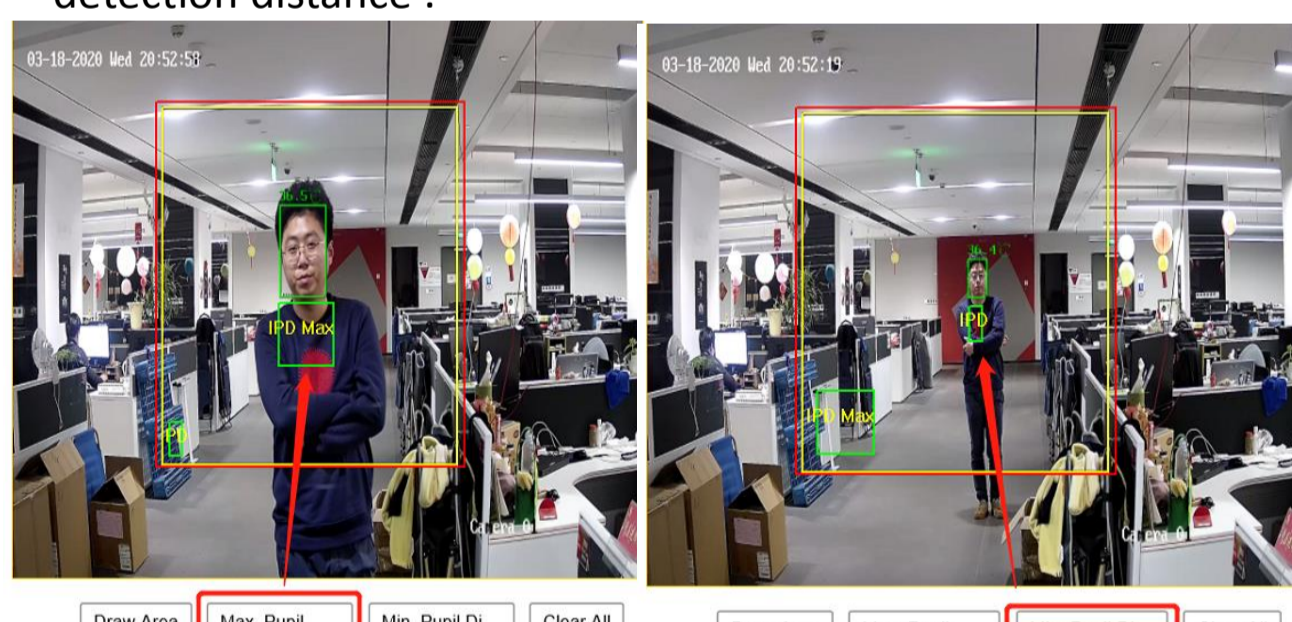


Check **Enable Face Detection** and **Display Temperature**. **Suggest uncheck Upload Captured Face Image** and **Display Face Temperature Position** if its not a must.

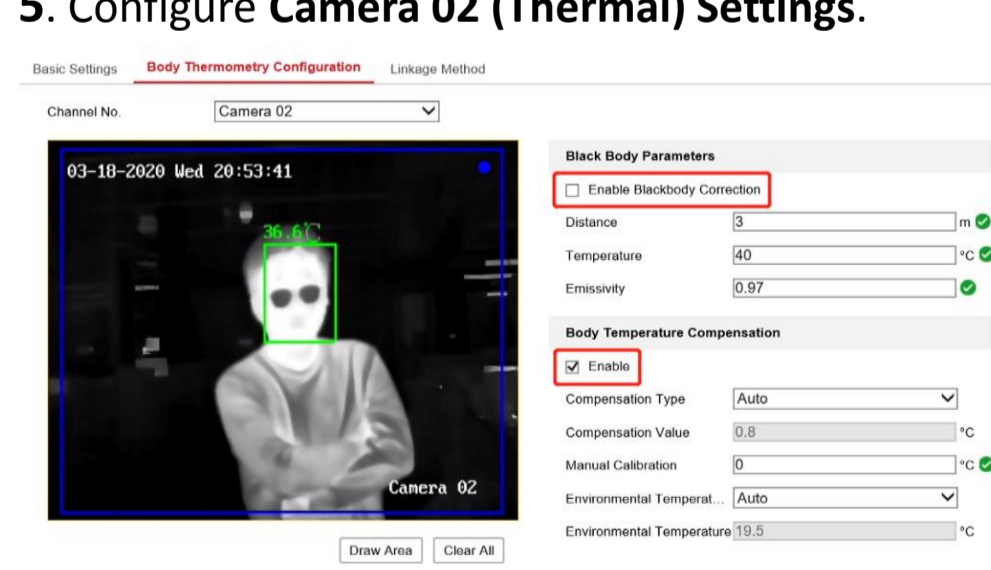
Set **Alarm Temp.** and **Pre-alarm Temp.**

Press **Draw Area** to adjust face detection region.

Click **Max. Pupil Distance** and **Min. Pupil Distance** to draw width filter frame, Max and Min distance refer to camera detection distance.



5. Configure Camera 02 (Thermal) Settings.



Uncheck **Enable Blackbody Correction** If no blackbody is used. Check **Enable of Body Temperature Compensation** and keep parameters as default.

3 Advice

The environment would easily influence the performance of thermal camera. Therefore, it is required to be used in a stable indoor environment without wind, and the ambient temperature should be consistent.

Here's some advice:

1. Set up a one-way screening zone, and ensure that camera can clearly see the face of person whose body temperature is being measured.
2. Avoid backgrounds that are too crowded or bright.
3. 30 minutes after turn on the camera, then go body temperature measurement, because the camera itself needs to be steady first.
4. If there is a large gap between indoor and outdoor temperature, it is suggested to wait more than 5 minutes then measure body temperature of whom just got in.
5. Follow the guidance of required temperature measurement distance and height.